



STATIONERS' HALL

Venue Hire



Stationers' Hall is a Grade I listed building, close to St Paul's Cathedral. Completed in 1673 after the Great Fire of London, steeped in history and tradition, Stationers' Hall offers an impressive and unique venue that is eminently suitable for a wide variety of business and social events, from breakfast meetings and filming to formal dinners and summer garden parties.

Rooms include the grand Main Hall, a fully equipped conference suite on the third floor and the warm welcome of the Court Room. The Garden is the central focus of the venue and can be included in your hire fee. Step-free access and air-cooling make for an accessible events venue for all guests.

Stationers' Hall is home to The Worshipful Company of Stationers and Newspaper Makers, one of the Livery Companies of the City of London, whose origins can be traced back to the 15th century craftsmen and traders who wrote and bound books or supplied writing and binding materials. The name arose from their fixed stations - for they were amongst the first medieval tradesmen to stop being itinerant vendors. In 1403, a Stationers' Guild was formed in London and, when printing was introduced to England in 1476, the Guild had the good sense to welcome printers as members. The power of print led to Queen Mary Tudor granting the Guild a royal charter in 1557, requiring the new Company to check and register every book published in England and giving its members a monopoly in printing. Three years later, the Company officially became a City of London Livery Company, 47th in order of precedence.

Today the Company has over 900 members, the vast majority of whom are senior executives in the communications and contents industry, such as paper, print, publishing, packaging, office products, fine stationery, newspapers, journalism, broadcasting and online media.



OUR SPACES



The largest of the rooms is the Main Hall, with oak flooring and carved oak panelling originating from the 1600s. Together with huge stained-glass windows, this space has an impressive ambience. It is fully equipped with an integrated PA system, along with high-speed connectivity for live streaming or hybrid events. Other facilities available for hire include staging, lecterns, a hearing induction loop and a baby grand piano. This room is particularly suitable for larger events such as conferences, meetings and exhibitions, as well as formal seated lunches, dinners and standing receptions. Our in-house caterer and approved production partner are on hand to bring your event to life and create the most memorable experience for your guests.

THE COURT ROOM



Overlooking the Garden, the Court Room is especially suitable for smaller meetings, seminars and AGMs or as a catering area for larger conference events taking place in the Main Hall. It is also excellent for a drinks reception before a seated lunch or dinner.

The Court Room is a wonderfully bright room, richly carpeted and with Rococo ornamentation in gold adorning the walls. It is dominated by an 18th century carved mantelpiece and is popular during the warmer months, particularly for summer parties.



When holding events in the Main Hall guests arrive via the Crush Landing for registration straight into the Stock Room, which is ideal for refreshments or pre-dinner drinks. This room can also serve as a great breakout space for plenary sessions for a larger conference. The oak panelling and carvings in the Stock Room date back to the 17th century.

THE STOCK ROOM

THE GARDEN



Our beautiful paved and landscaped urban Garden is a private and secluded space, offering a unique setting for barbeques, standing receptions and summer parties.

The garden is dominated by an enormous London plane tree which marks the spot where heretical books, condemned by the ecclesiastical authorities, were burnt in Tudor times.



Newly renovated, this open space has been designed with flexibility in mind, accommodating theatre style for up to 60 people or as three separate board rooms. Wall-mounted screens are included for presentations and high-speed wifi allows for streaming live when hosting a hybrid event.

3RD FLOOR MEETING SPACE

CHARTER ROOM



With floor to ceiling windows, this private dining room located in the newly renovated Garden entrance is a bright space overlooking the garden and accommodates 12 people for a round table meeting or private lunch or dinner.



YOUR
EVENT



Stationers' Hall boasts a range of meeting rooms for hire for your next conference or seminar.

All rooms can be hired exclusively or you can book the rooms individually to suit your requirements.

We offer DDR packages that work for you, so speak with the venue team to get the best for your event.



Whether formal or relaxed, extravagant or intimate, Stationers' Hall and Garden can offer an impressive setting for any celebration. Working with our resident caterer our experienced team will offer advice and assistance in arranging an event to remember.



Our outdoor space is perfect for a bbq or themed interactive food station, while canape or bowl food receptions are also popular.

The ever-changing Garden hosts an abundance of seasonal plants and flowers, and the impressive London plane tree offers welcome shelter and shade come rain or shine for up to 200 guests.

The Garden can be decorated with bunting, fairy lights and lanterns to create that perfect summer garden party atmosphere.



The Hall's versatility as an event venue, not to mention its proximity to neighbouring St Paul's Cathedral, is what makes it such a sought-after location.

Whatever your project, we are here to help your shoot run smoothly - from feature films, tv shows and music video to gaming events and fashion shows, and all that's in between. Stationers' Hall offers charm and character with wood-panelled rooms, stain-glassed windows, and a Garden for any outside shoots.



Food and drink are at the heart of Stationers' Hall. Our resident caterer works hard to create exceptional seasonal menus for you to select from, which reflects the latest modern cuisine as well as traditional classics.

All dishes are prepared with quality, fresh ingredients, purchased from specialist suppliers on a daily basis. Produce is scrutinised for origin, quality and freshness. Wherever possible we use small, local suppliers and support fair trade wholeheartedly.



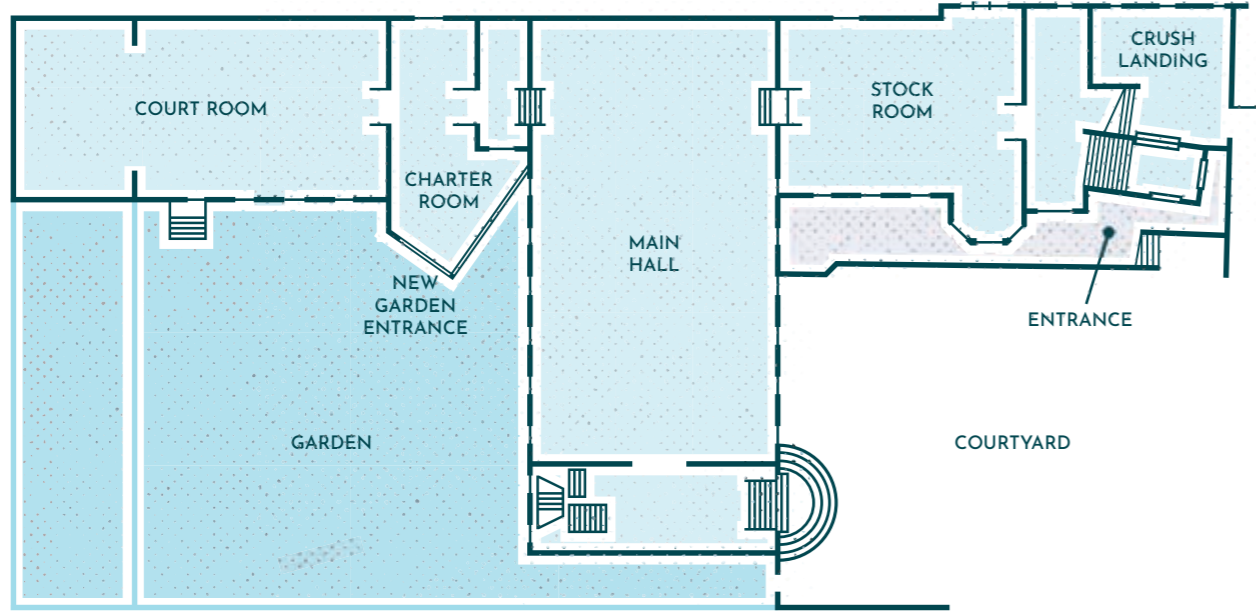
We offer an integrated audio system with in-house staging and support from our Hall team as well as complimentary wifi.

You can speak to our production partner for more hands-on technical requirements such as live streaming and video recording.



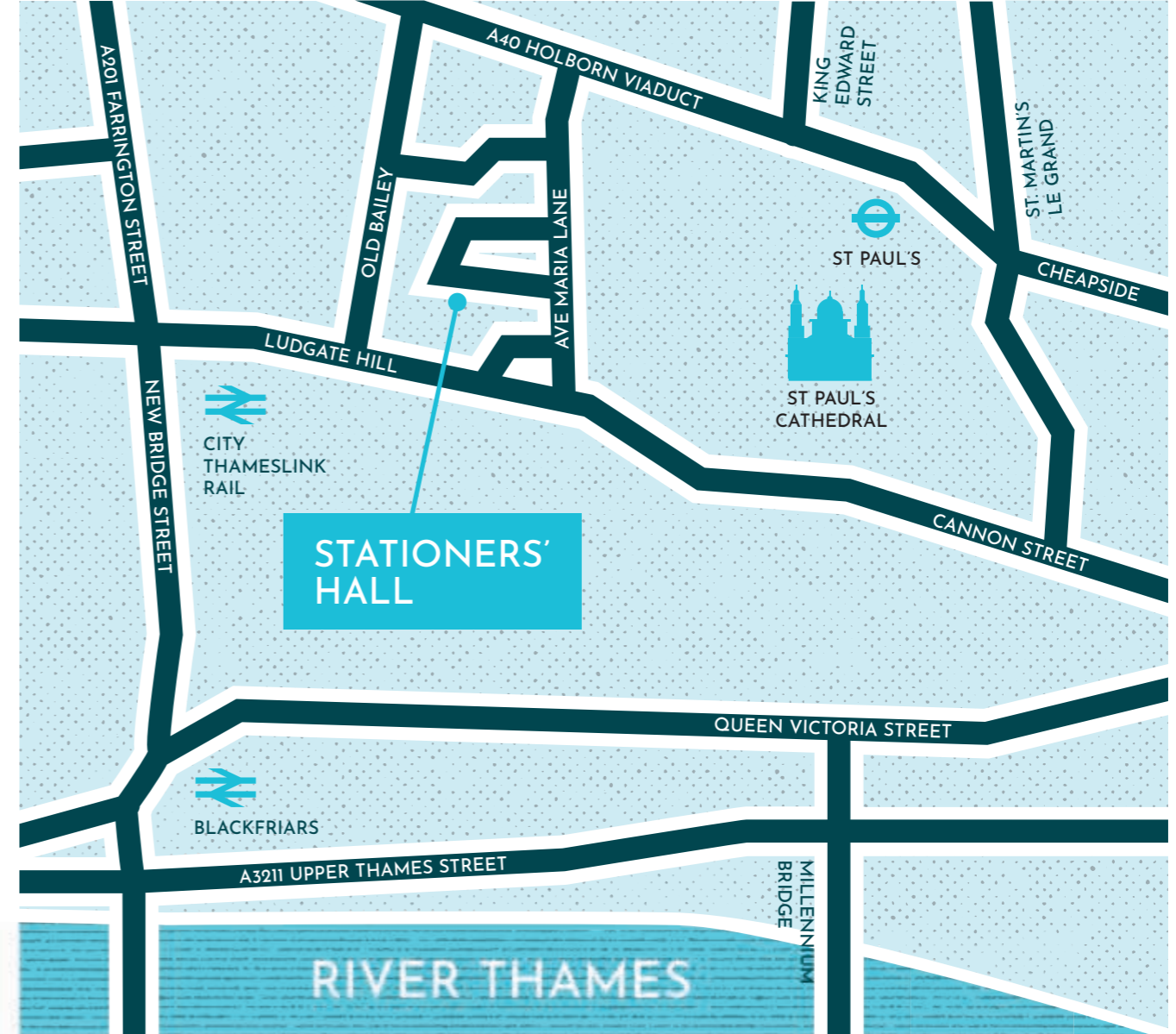
STATIONERS' HALL CAPACITY CHART	Main Hall	Court Room	Stock Room	Garden	Charter Room	3rd Floor (Exclusive)	Room 1	Room 2	Room 3
STANDING RECEPTION	450	180	100	200	-	60	-	-	-
ROUND TABLES	150	90	60	-	12	-	-	-	-
LONG TABLES	200	64	-	-	-	-	-	-	-
DINNER/ DANCE	200	-	-	-	-	-	-	-	-
BOARDROOM	-	32	-	-	-	24	12	8	12
THEATRE STYLE	200	120	-	-	-	60	-	-	-
CLASSROOM	84	55	-	-	-	-	-	-	-
CABARET	96	54	-	-	-	-	-	-	-

FLOOR PLAN



Following renovations Stationers' Hall, now offers more flexibility with step-free access through the new Garden entrance and air cooling through out.

The venue can either be hired exclusively or by individual room pairings which are available depending on your numbers and style of event.



LOCATION MAP

CONTACT:

Stationers' Hall
Ave Maria Lane
London EC4M 7DD

020 7246 0999

hallhire@stationers.org

www.stationershall.co.uk

   @stationershall